

DARKOOB  
GROUP

2023 / 2024

# 01. CONCEPT



High quality  
products



10-year guarante  
[long term support]

**GIANT**<sup>®</sup>  
100% made in Italy

**PARADOR**

  
**VETEDY**  
GROUP

## ABOUT DARKOOB:

At the Darkoob group. We understand that your flooring is more than just a surface. It is an essential element of your home or business's character and functionality. Whether you seek the warmth of classic hardwood, the durability of engineered wood, or the eco-friendly appearance of sustainable options, We offer an extensive range of wood flooring choices to suit your unique style and preferences.

With 14 years of experience in the industry, our team of experts is dedicated to providing you with top-notch service, from consultation to installation. We pride ourselves on our attention to detail, quality craftsmanship, and unwavering dedication to customer satisfaction.

Join us on the journey to elevate your space, one step closer to a world of enduring beauty and comfort.

## WE DESIGN YOUR FLOORING





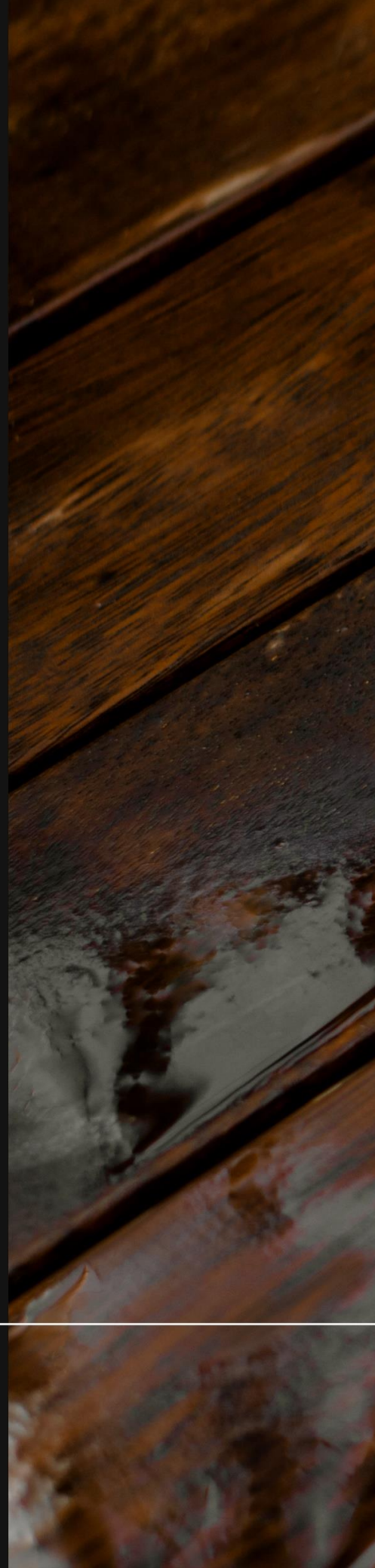
# DECKING

wood

outdoor flooring

---

02











# DECKING

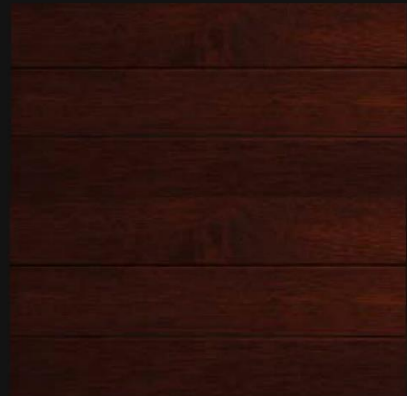
wood

Decking is the ideal solution to make the spaces for outdoor relaxation even more elegant.

To ensure protection from danger, there are certain qualities to look for when shopping for wood for an outdoor deck.



JAYA



MERBAU



PADAUK



TEAK



IPE



AFRORMOSIA

DECKING



Tandis zanbagh project  
Roof garden decking by DARKOOB GROUP



Lavasan project  
Cladding by DARKOOB GROUP



# CLADDING

wood

out door

---

03

# CLADDING

## wood

Wood cladding is a multi-faceted process that involves covering the exteriors of any building or structure with a layer of premium materials that provide thermal insulation and protection against harsh environmental conditions. Very often, this exterior surface also controls how elements hit or fall on a surface.

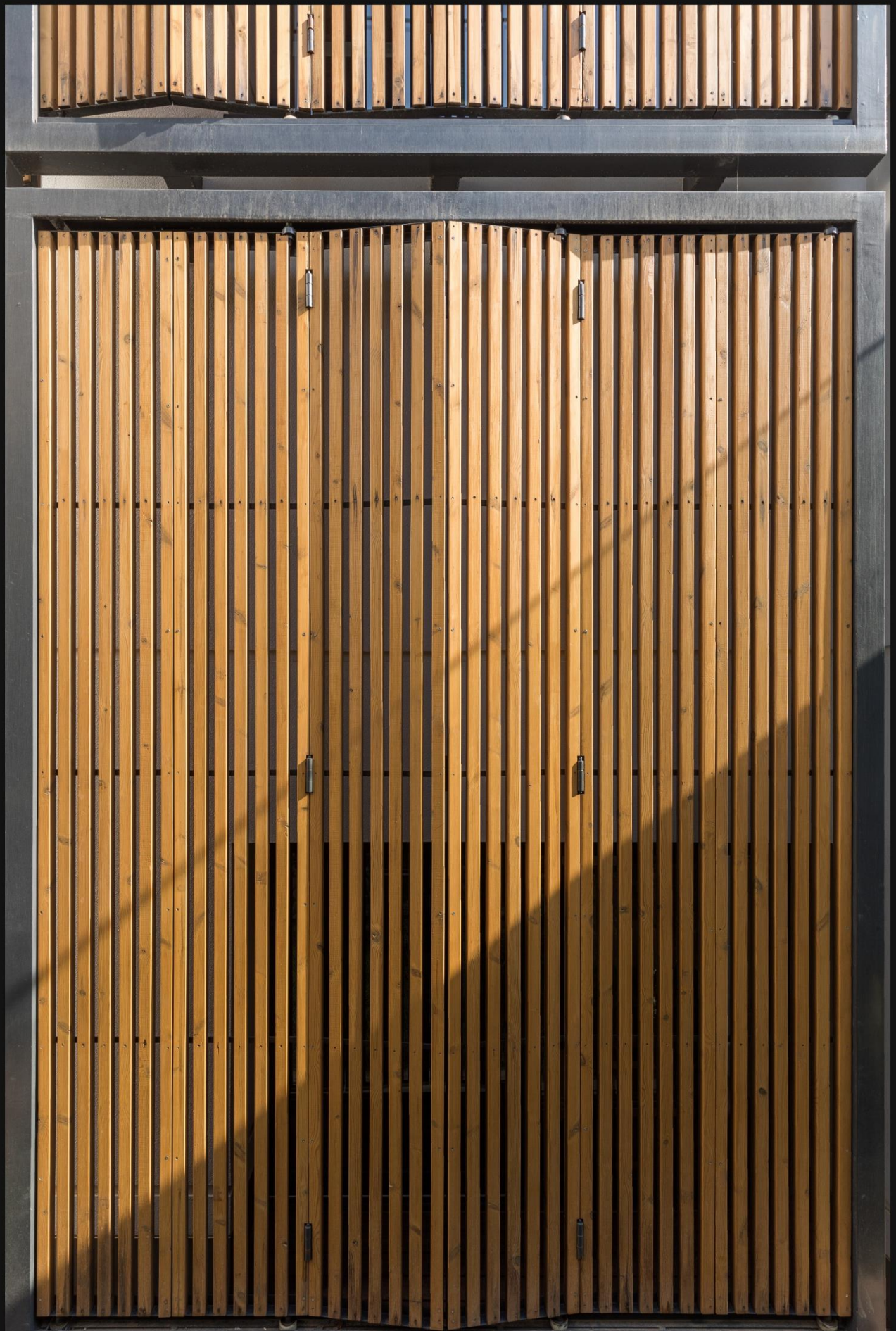
### Advantages :

- water-based
- adapts easily to any context
- immediate application
- practical in use

outdoor

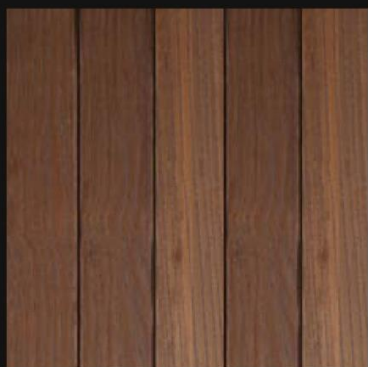
---

03



Lavasan project  
Cladding by DARKOOB GROUP

# CLADDING



NORTHERN PINE



YELLOW PINE



PINE



AYOUS



EUROPEAN ASH



IROKO





# SOLID

wood flooring

---

04  
parquet

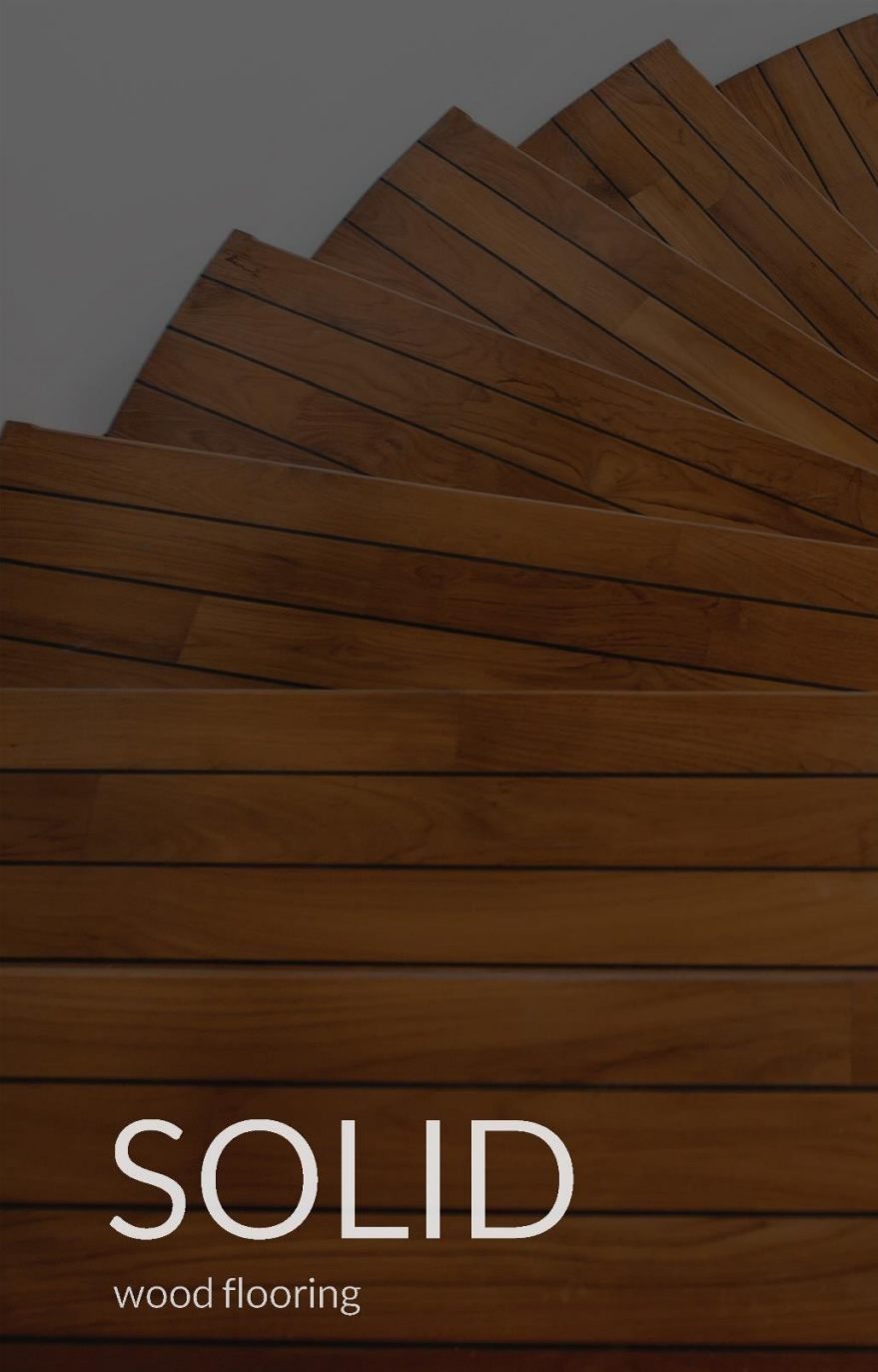
---

A photograph of a wooden staircase with a white wall. The stairs are made of solid wood and are positioned on the left side of the frame. The wall is white and has a shadow cast across it from the top left. The shadow is cast by the wall itself, creating a diagonal line across the wall. The word "SOLID" is written in large, bold, white letters on the wall. Below the word "SOLID" is a horizontal line. To the right of the line, the words "wood flooring" are written in a smaller, lowercase font. The overall scene is brightly lit, with strong shadows.

# SOLID

wood flooring

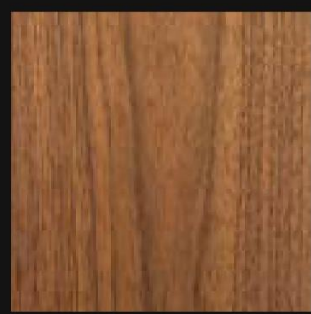
Solid wood flooring is a type of flooring made from a single piece of wood, typically hardwood. Unlike engineered wood flooring, which consists of multiple layers of wood veneers glued together, solid wood flooring is composed entirely of solid wood from top to bottom.



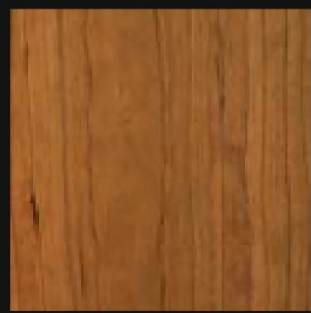
# SOLID

wood flooring

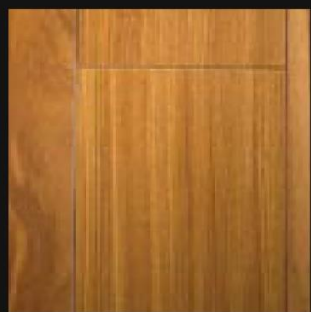
04  
parquet



AMERICAN WALNUT



AMERICAN CHERRY



AFRICAN AFRORMOSIA



AFRICAN IROKO



AFRICAN WENGE



INDONESIAN TEAK



SHIPDECK TEAK



MERBAU



DOUSSIE



AMERICAN RED OAK



PALISSANDER



EUROPEAN OAK



AMERICAN WHITE



PADAUK



EUROPEAN



OAK

# ENGINEERED

## WOOD FLOORING

---

05 - parquet



---

Engineered wood flooring combines multiple layers of timber with a solid wood veneer. Designed to allow for wood expansion, engineered wood is compatible with underfloor heating systems and boasts a high moisture tolerance level.

This material is built to last, giving homeowners all the benefits of a wooden deck without the common problems.

A close-up photograph of engineered wood flooring. The image shows a transition strip, likely made of metal, separating two different sections of the floor. The wood has a light, natural finish and a visible grain. The transition strip is a dark, thin metal bar that runs diagonally across the frame. The wood planks are laid in a traditional parallel pattern.

# ENGINEERED

## WOOD FLOORING





WALNUT MATT LACQUER



OAK CHALET



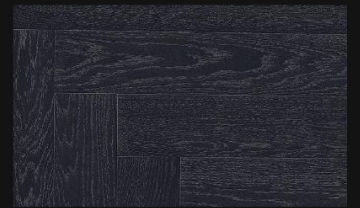
OAK NOIR SAWN TEXTURE



THERMO OAK MEDIUM BRUSHED



EUROPEAN MAPLE GRAY



NEA RELIEF OAK BLACK



OAK SMOKED



ASH FINELINE PATTERN



WALNUT ANTIQUE



OAK SMOKED GREY  
HANDCRAFTED



BEECH MONT BLANC



OAK LIMED HANDCRAFTED



[www.darkoobgroup.com](http://www.darkoobgroup.com)

[info.darkoobgroup.com](mailto:info.darkoobgroup.com)



Iran, Tehran, Zafaraniyeh, Ejazi St



(+98)02122403070



+989107626838



DARKOOBGROUP



DARKOOBGROUP



[www.darkoobgroup.com](http://www.darkoobgroup.com)

[info.darkoobgroup.com](mailto:info.darkoobgroup.com)